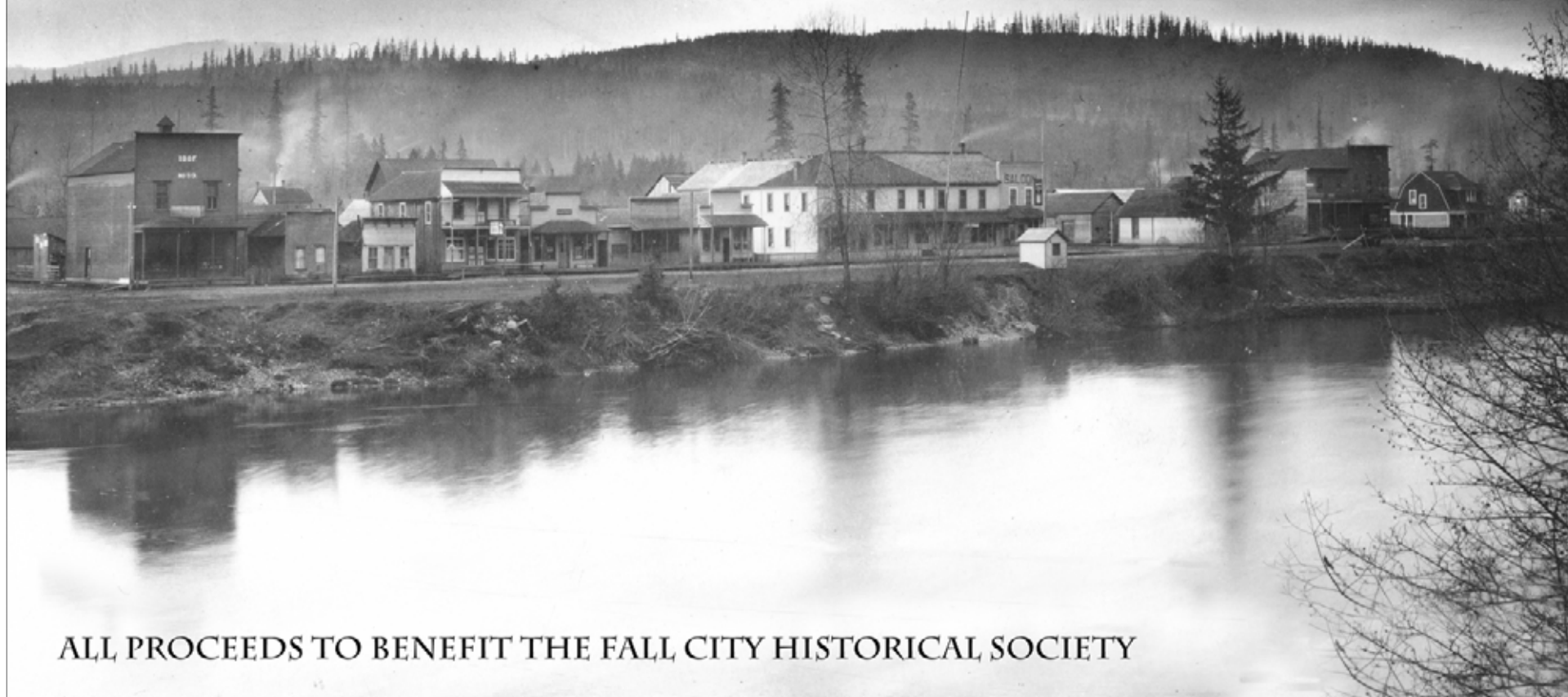


2007 FALL CITY CALENDAR

PHOTOS FROM JACK'S HISTORY OF FALL CITY



ALL PROCEEDS TO BENEFIT THE FALL CITY HISTORICAL SOCIETY



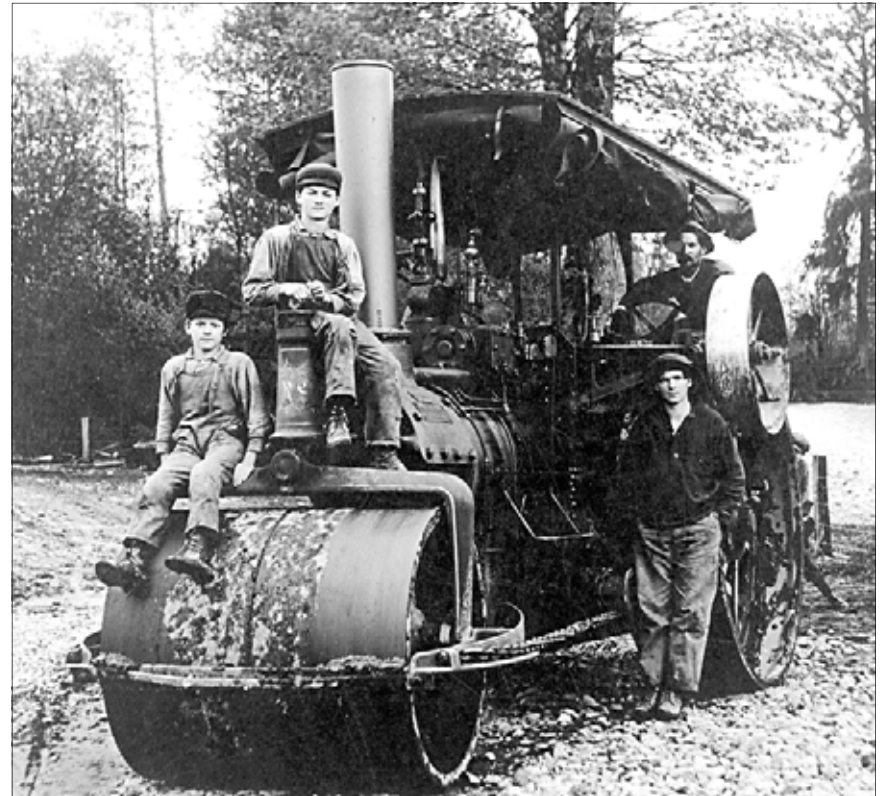
Fall City Mill Company, early 1900s. (Jack Kelley)



(left and above, Washington State Archives, Puget Sound Region)

***Road building,
Fall City, early
1900s.***

Above, railway gravel bunker, near present SE 56th Street and Lake Alice Road. Right, top, Oultman tractor and wagons for hauling gravel. In the background are the Neighbor-Bennett house and the Methodist Church, before it moved across the street. Right, bottom, steamroller Titanic. L-r, Paul, Ralph, and Harry Moore, with driver Charles Moore, Sr.



(Hazel Schlichte)



Horse logging near Fall City, dumping into river. (Rowan Chisholm)



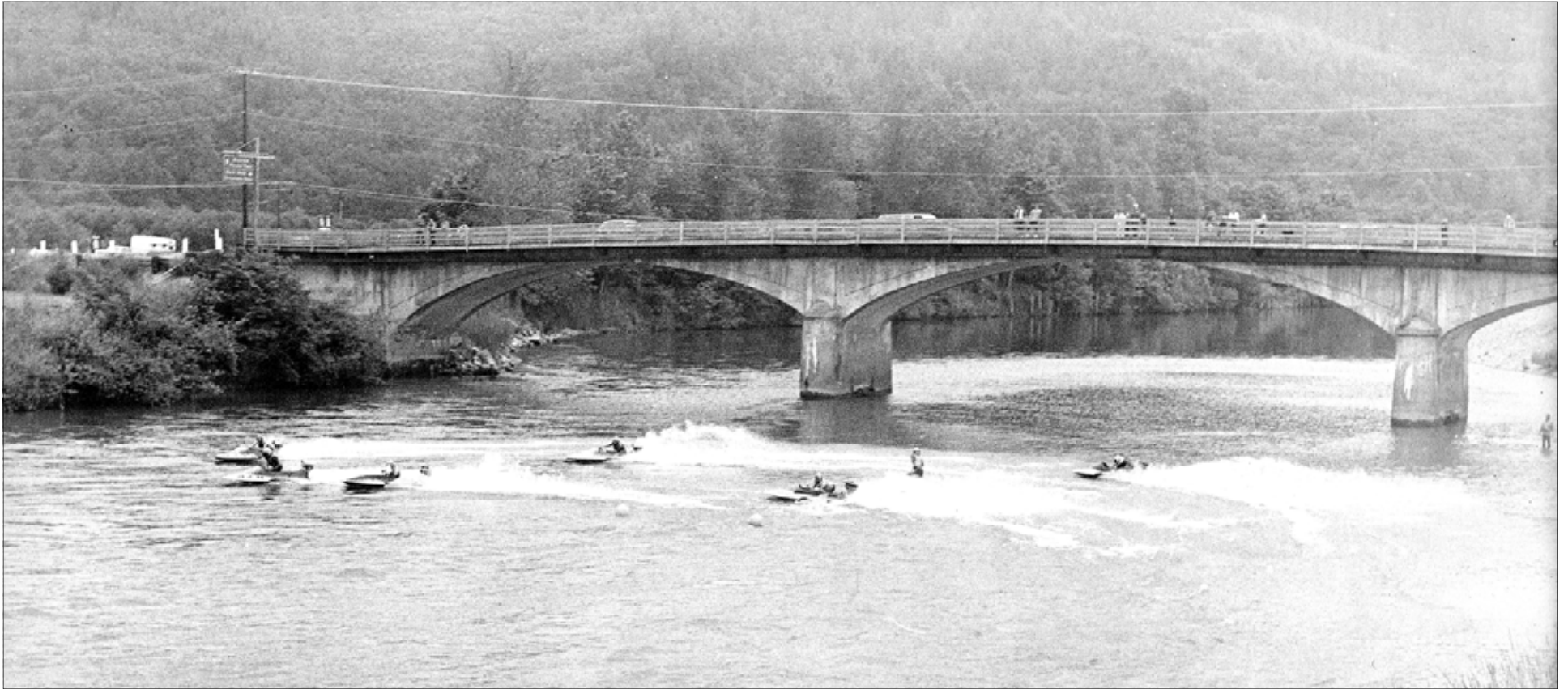
Milk boat on the Snoqualmie River. (Jack Kelley)



Fall City Totem Pole

Left, Hugh Hinds carving the totem pole, near his home in Fall City.

Above, the Totem Pole Dedication Ceremony, December 16, 1934.



Boat races on the Snoqualmie River at Fall City, 1960s. Jack Chisholm photo. (Rowan Chisholm)

The bridge shown is the Luton arch bridge in use from 1917 to 1980.



Rev. A.J. McNemee, known as "Brother Mac" arrived in Fall City in August of 1885 and held worship services in the original Fall City Schoolhouse. That fall he built the first church building which was later sold. In 1918 the Methodists bought the Baptist church building and in 1928 moved it across the street to its present location. By 1961 two new additions to the building were completed. In 1959 the church established the Fall City Passion Play, which has been performed for the last 26 consecutive years to over 60,000 people. Today the church looks forward to a bright future in continuing its ministry to the Fall City community.

At right, the Baptist Church building and congregation in 1899. The Methodist Church purchased the building in 1918, and later moved it across the street to its present location. The commemorative plate above, and text from back, was commissioned in 1985.



Fall City United Methodist Church. (Fall City United Methodist Church)



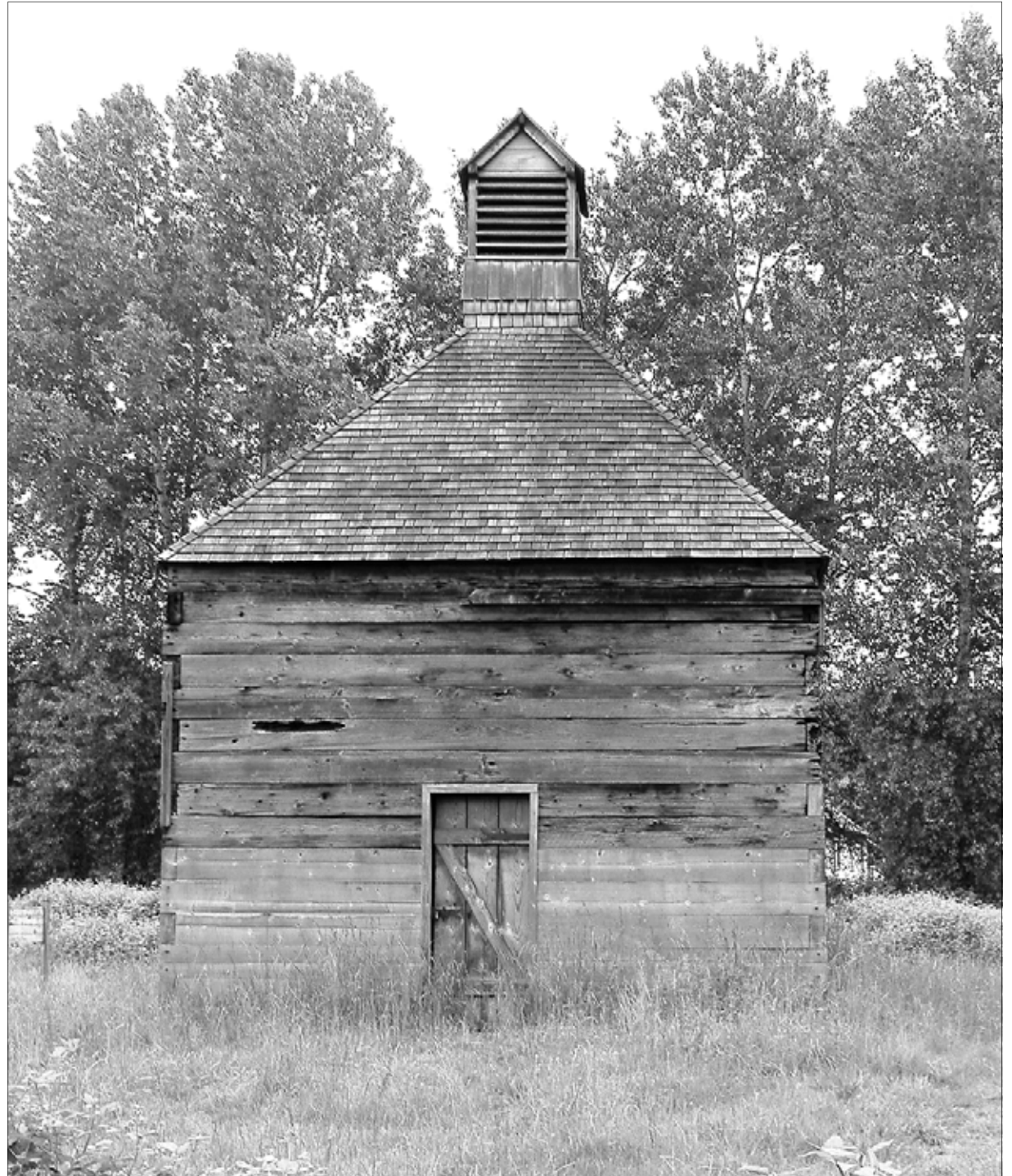
Fall City Baseball Club, 1904. (Jack Kelley)



Fall City Hop Shed

The hop shed was originally built in 1888 by Fall City pioneer Davis Rutherford. It was sold to neighbor Jack Bush in 1904 and moved to its present location. The photo above shows Jack Bush, with the hop shed in the background. (Suzanne Badten)

The Fall City Hop Shed was designated a King County Landmark in 1982, and was restored in 1997. The photo of the restored hop shed shown at right was taken in 2006 by Grace Culver.





Fall City Model Garage, c1928. (Emma Burnard)



Benevolent and Protective Order of Elks, Fall City, c1905. (Jack Kelley)



River Street, looking east, Fall City, early 1900s. (Don Bluher)