

# FALL CITY CALENDAR 2021



ALL PROCEEDS BENEFIT THE  
FALL CITY HISTORICAL SOCIETY

\$15

**OLD FAVORITES**

# PHOTO CREDITS

## FRONT COVER

*Fall City Historical Society*

## JANUARY

*Fall City Historical Society*

## FEBRUARY

*Snoqualmie Valley Historical Museum*

## MARCH

*Fall City Historical Society*

## APRIL

*Whatcom Museum  
(Bellingham, WA)*

## MAY

*Snoqualmie Valley Historical Museum*

## JUNE

*Fall City Historical Society*

## JULY

*Fall City Historical Society*

## AUGUST

*Snoqualmie Valley Historical Museum*

## SEPTEMBER

*Fall City Historical Society*

## OCTOBER

*Whatcom Museum  
(Bellingham, WA)*

## NOVEMBER

*Fall City Historical Society*

## DECEMBER

*Photo by Rick Divers*

(All photo captions are at the end of the calendar.)







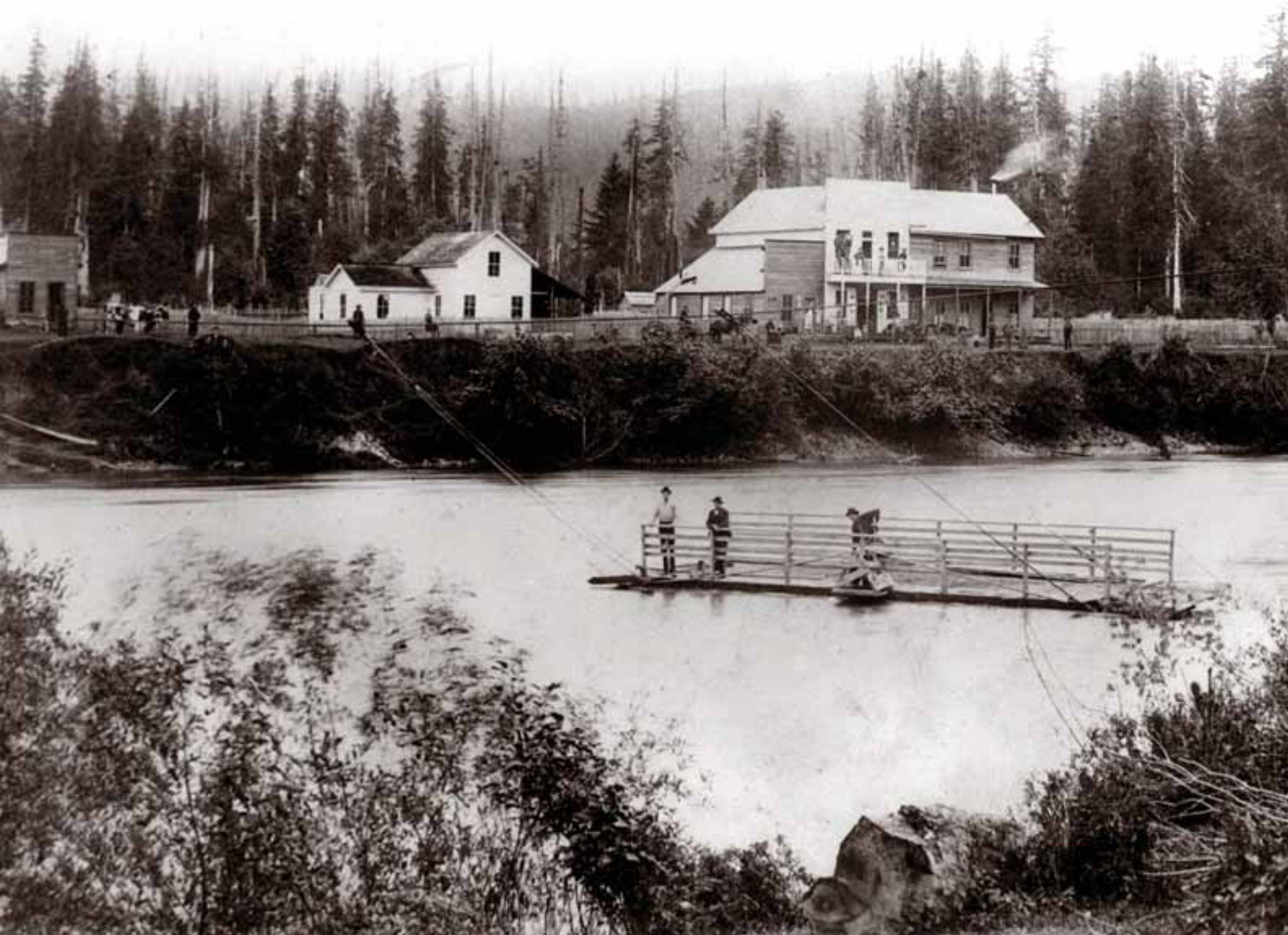




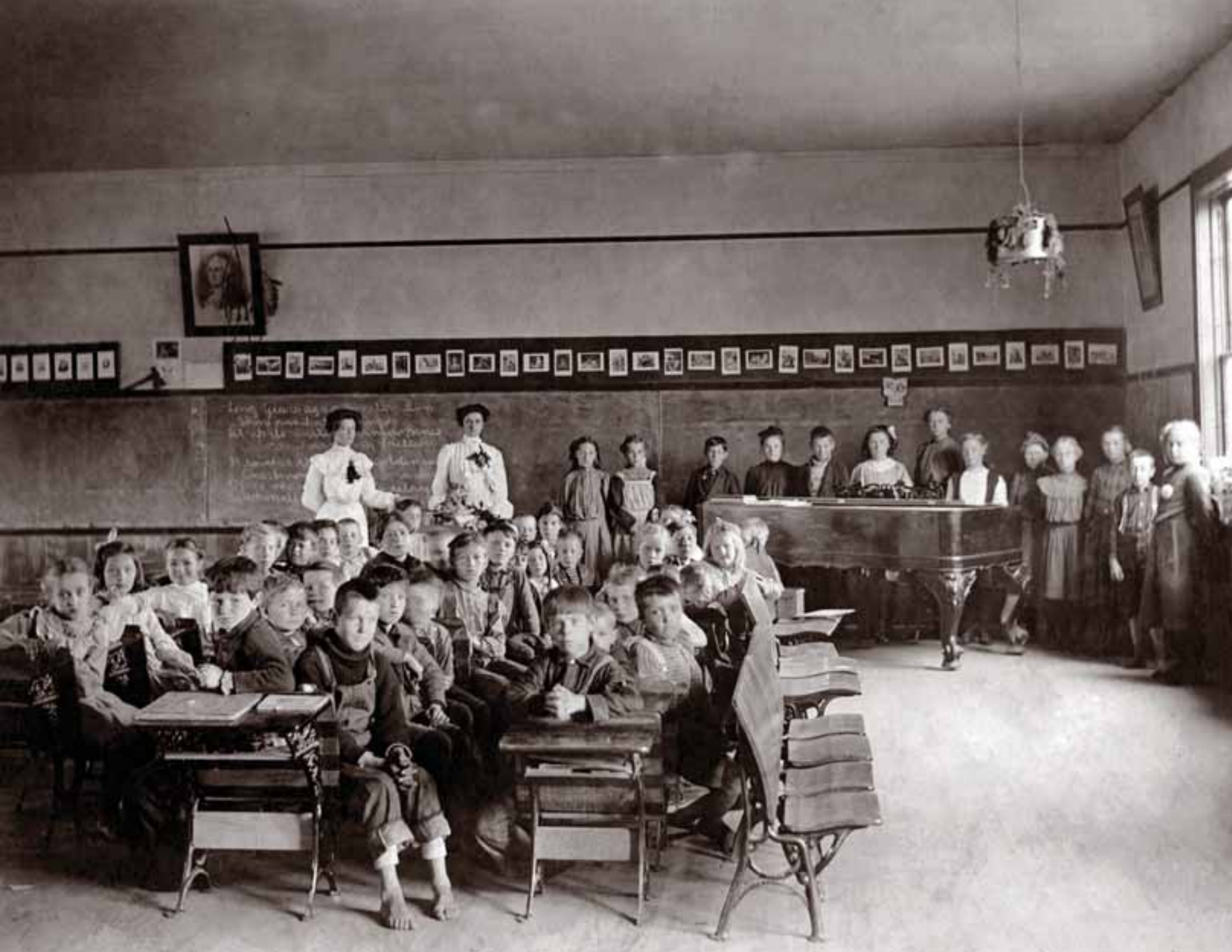
















WRIGHT  
GARAGE

WILLOWS HALL

Your  
Credit  
Is  
Good

SPRAY  
ICE CREAM

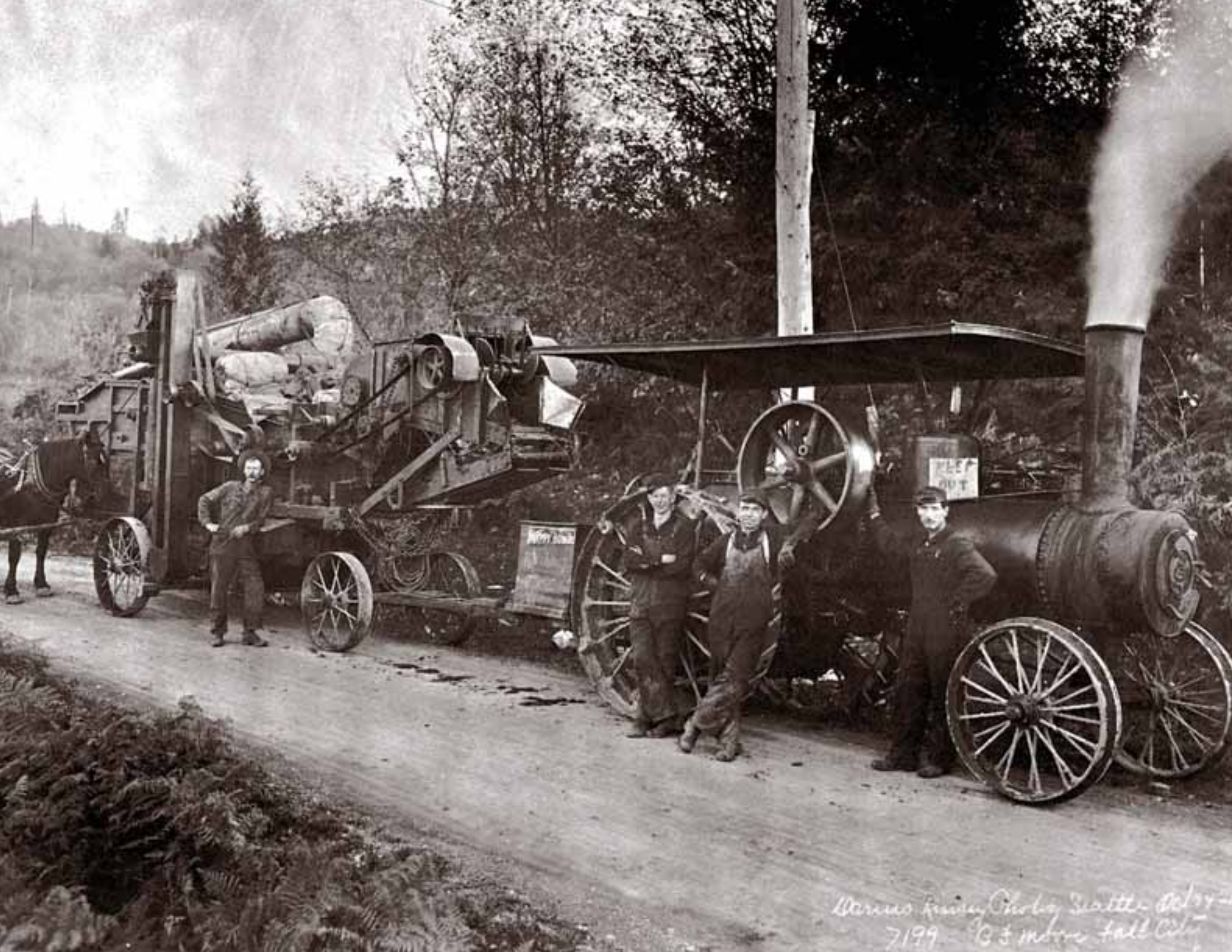
CARS CHEVROLET

S  
ery

ALLEN  
photo 364

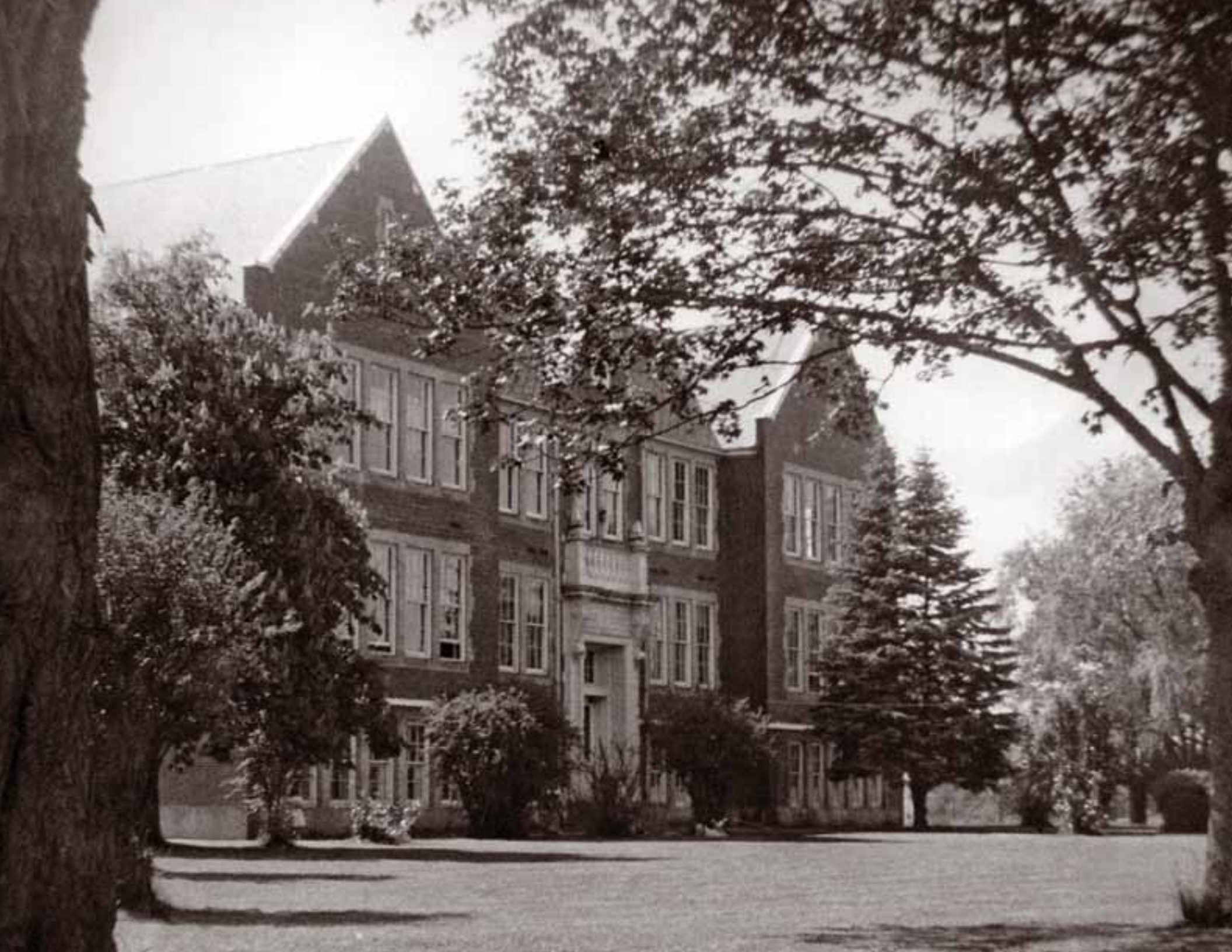
Fall City wash.





Barren Run, Oregon, Sept. 14-1914  
7199 - B & M Co. fall 1914











**BURNS & SON**  
**THE "ONE PRICE" STORE.**









# PHOTO CAPTIONS

## FRONT COVER

This wonderful photo of early Fall City, circa 1909, taken by North Bend photographer Siegrist, was published as a postcard. No other versions of it are known. It was used on the cover of *Jack's History of Fall City*. Jack Kelley dated it as 1906 or 1907; however, an article in the *Issaquah Independent* in 1909 announced the expansion of Hotel Fall City to merge it with the adjacent saloon, which had already happened in this photo.

## JANUARY

A snowy scene on River Street, circa 1903. The large building on the right was Charles Bonell's second store, in the Marshall Building. Bonell was appointed Fall City postmaster in October 1900. The Fall City Post Office was located in his store (sign above the two figures on the porch) from about 1900 until 1931, when the building burned down.

## FEBRUARY

This 1888 photo shows the steamboat *Cascade* at a landing on the Snoqualmie River, taking on wood for its engine. Captain Gove stands on the upper deck in front of the pilot house. Steamboats were the primary means of transportation into the Snoqualmie Valley until the railroad came in 1889.

## MARCH

Hugh Hinds of Fall City is shown carving the Fall City Totem Pole, near his home. The 43-foot pole was erected in 1934 and dedicated to the memory of Mrs. Julia Harshman. In 1964, it blew down, but after extensive repairs was erected again in 1967. By 1981, major restoration was needed, and the pole was taken down a second time and stored in a barn.

In June 1982, the second Fall City Totem Pole, 30 feet tall and carved by Herman Williams of the Tulalip tribe, was erected. In 1997, extensive restoration and preservation work was begun on the original 1934 pole by Richard Kirby, a team from Chief Kanim Middle School, and Fall City Boy Scout Troop #425. In 2001, it was re-installed where it had stood for 44 years and remains there to this day.

## APRIL

This is one of thousands of logging photos taken in the early 1900s by Darius Kinsey. The cedar shown in this photo is supposed to have been the largest tree in the State of Washington, measuring 76 feet in circumference at 1½ feet from the ground. The loggers are (L-R) Art Howe, Hortie Howe, and Bill Palmer. The photo was taken in 1906, probably near Vaughn, Washington, where the Howe family lived before moving to Fall City in about 1908.



## **MAY**

View of early Fall City and the ferry across the Snoqualmie River, circa 1887.

## **JUNE**

Classroom interior of an early Fall City school—probably the Brown School, used from 1900 to 1915.

## **JULY**

This interesting view of River Street, looking west, was taken by John Juleen, circa 1924. Starting at left, a portion of Magee's Confectionary is next to the early Model Garage building, followed by the Murphy house and the tall IOOF building, with the Dunstan Brothers store at street level. Although we see only glimpses down the street from there, in the distance on the right is the distinctive outline of the three-story Brick School, located where we now find the FCES parking lot.

## **AUGUST**

Ben Moore and crew, shown in this Darius Kinsey photo from 1914, harvested crops for Valley farmers with the first steam threshing machine.

## **SEPTEMBER**

This is the most elegant photo of the Fall City Brick School. It was home to all 12 grades from 1916 to 1944 and continued to house elementary school students until the late 1960s.

## **OCTOBER**

Railroads were vital to the logging industry. In this Darius Kinsey photo, a logging train is seen on a high trestle over a river, perhaps the Raging River, near Fall City.

## **NOVEMBER**

This is one of Fall City's iconic business-front photos, of Burns & Son, the "One Price Store." The building was originally built to house the Snoqualmie Valley Cooperative Store, but when that venture failed, Robert and Mecie Burns bought the store in 1909, to save the investment they had made in the company. The "Son" referred to Perry Burns, and "One Price" meant there was no bargaining on the price. Burns & Son continued in business until 1922, when Chapman's Cash Store opened next door. Rather than modernize and compete, Robert sold the building to his son-in-law, Jesse Kelley, and retired to his garden and orchard.

## **DECEMBER**

The Fall City Hop Shed, November 2018.





*We are grateful for  
support for our work  
received from King  
County Heritage  
4Culture.*



FALL CITY HISTORICAL SOCIETY  
P.O. BOX 293  
FALL CITY, WA 98024  
[www.fallcityhistorical.org](http://www.fallcityhistorical.org)

Follow us on Facebook and Instagram!

Graphic design by  
DAVID GERSHMAN

Published in 2020 by the  
FALL CITY HISTORICAL SOCIETY